

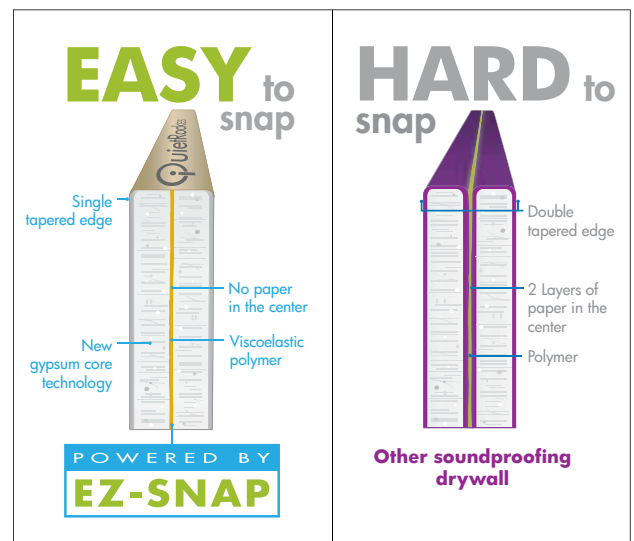


Lowest cost, true score and snap with with **EZ-SNAP** technology

QuietRock ES is the first sound reducing drywall that easily scores and snaps using breakthrough EZ-SNAP technology. QuietRock ES has no paper and no metal on the inside of the panel yet delivers acoustical ratings of up to STC 55 on single stud construction. This patented product is easier to install and is less expensive than any other sound reducing drywall and is ideal for residential and commercial construction.

QuietRock ES Benefits

- Powered by EZ-SNAP for true score and snap
- On average, 3x easier to snap than other acoustical drywall
- Faster to install for increased productivity and lower labor costs
- Less materials save time, money and waste
- Maximizes usable floor space by using just a single layer
- Outperforms other noise reduction methods, including soundboard and resilient channel
- High reliability: unlike resilient channel, cannot be easily short circuited
- Abrasion resistant paper



Distributed in Canada by:



Product Specifications:

Thickness: 5/8" (15.9mm), tapered edges
Width: 4' (1220mm)
Lengths: 8' (2438mm)
Weight: 2.6 lbs/sqft
STC-rated: 48-60 (ASTM E90)
Fire-rated: 1 hour, Type X (ASTM E119)
Flame spread: Class A (ASTM E84)
ASTM Standards: C473, E84, E90, E119

UL Assembly:

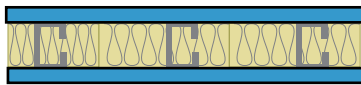
QuietRock ES is approved for use as an additional layer on one or both sides of the U300, U400, V400 and W400 wall designs as well as an additional layer in the L500 and M500 series floor/ceiling assemblies as either the face layer or directly attached to the studs/joists.

QuietRock ES panel not evaluated nor intended as a substitute for the required layer(s) of UL Classified Gypsum Board in the above listed Designs.

Common Wall Assemblies:

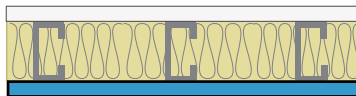
Heavy Gauge Steel Stud Walls

3-5/8" Single Steel Stud Wall, 16" OC - **STC 48**



QuietRock on both sides

6" Single Steel Stud Wall, 16" OC - **STC 49**



QuietRock on one side,
Type X on the other

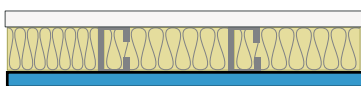
6" Single Steel Stud Wall, 16" OC - **STC 53**



QuietRock on both sides

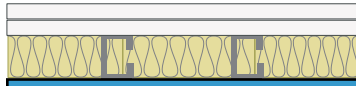
Light Gauge Steel Stud Walls

Single 3 5/8" Steel Stud Wall, 24" OC - **STC 55**



QuietRock on one side,
Type X on the other

Single 3 5/8" Steel Stud Wall, 24" OC - **STC 60**

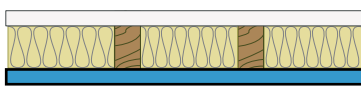


QuietRock on one side,
2 layers 5/8" Type X on the other

See Acoustic and Fire Assemblies document for more information.

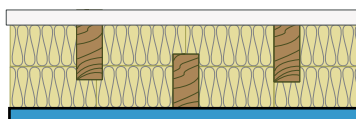
Wood Stud Walls

Single 2x4 wood studs, 24" OC - **STC 51**



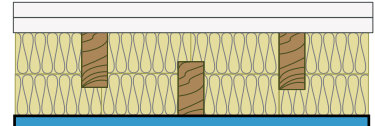
QuietRock on one side,
Type X on the other

Staggered 2x4 wood studs, 8" OC - **STC 55**



QuietRock on one side
5/8" Type X on the other

Staggered 2x4 wood studs, 8" OC - **STC 60**



QuietRock on one side
2 layers 5/8" Type X on the other

The information contained in this document is for general information purposes only. Features and specifications are subject to change. The diagrams and stated STC ratings listed are intended to serve as a guide. Construction practices have an influence on final STC ratings. Serious Energy cannot guarantee actual STC ratings. Flanking sound patterns, the integrity of the wall, and floor and ceiling construction are important factors in effective sound control. Exposure to excessive or continuous moisture and extreme temperatures of 125°F (52°C) or more should be avoided. QuietRock should be stored flat in a dry area, under cover on supported risers for to prevent damaged to product. Proper care should be taken while transporting, storing, applying and maintaining QuietRock.

Distributed in Canada by: