



# QuietRock® 530

HIGHER PERFORMANCE, HIGHER RELIABILITY, LOWER COST SOUNDPROOFING SOLUTIONS.



## Superb sound performance plus shear resistance

QuietRock 530 is a versatile, high performance drywall panel that delivers superb noise reduction. This 'superpanel' is UL and ULC fire-rated, STC-rated, shear-rated, impact-resistant, and optionally mould-resistant.

### QuietRock 530 Benefits

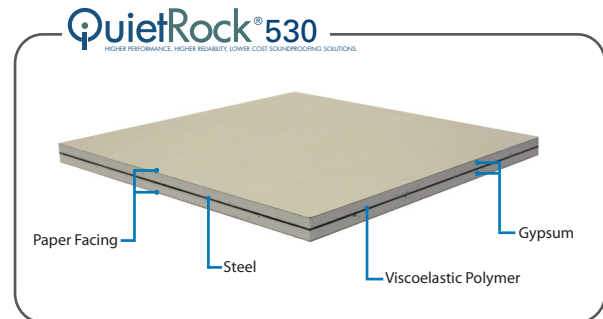
- Delivers STC ratings of 52-74
- Fire rating equivalent to Type X drywall; UL/ULC fire-rated
- Shear-rated (average 724.70 kg/m (487 lbs/ft))
- Mould resistant face and back available as an option
- Hangs and finished like standard drywall
- QuietRock 530RF available for RF and noise shielding and tested in accordance with IEEE 2999-1097; Radio Frequency shield testing (standard 530 does not provide RF shielding)
- Continues to reduce noise even when fixtures are installed, such as shelves or lamps
- Only 15.9 mm (5/8") thick
- Out performs other sound damping methods, including soundboard and resilient channel
- Environmentally friendly, lab tested
- Worldwide patents pending
- Can be used in load bearing and non-load bearing assemblies
- Tested in accordance with ASTM E695-03; impact load testing
- Tested in accordance with article 4, section 27-335.1(2) and article 5, section 27-348E of the building code of the city of New York

### Product Specifications

<b>Model:</b>	<b>QuietRock 530</b>
Thickness:	15.9 mm (5/8"), tapered edges
Weight:	16 kg/m <sup>2</sup> (3.3 lbs/ft <sup>2</sup> )
System STC Range:	52-74 (ASTM E 90)
Fire-rated:	1 hour, Type X equivalent (ASTM E119)
UL-rated assemblies:	U305, U309, U340, U341, U376, U386
ULC-rated assemblies:	W313, W317
Shear value:	67.4 kg/m (487 lb/ft.) (ASTM E2126)
Surface flame:	Class A (ASTM E84)
Permeability:	0
RSI value (R value):	0.067 (0.38)

### Applications

- Multi-family
- Commercial
- Hospitals
- Hotels
- Schools
- Home theatres
- Media rooms
- Recording studios
- Party walls



### STC Comparison\*

15.9 mm (5/8") gypsum	34
152.4 mm (6") CMU	45
Soundboard	46
Mass loaded vinyl	45
<b>QuietRock 530</b>	<b>52-53</b>

\*in single wood stud construction, 610 mm (24" OC)

### Product Ordering Codes

1219 mm x 2438 mm (4' x 8') panel: 313176

*QuietRock 530 is available with an optional mold resistant coating. If desired, please specify this option when ordering.*



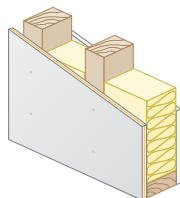
# QuietRock® 530

HIGHER PERFORMANCE, HIGHER RELIABILITY, LOWER COST SOUNDPROOFING SOLUTIONS.

## Lowest-Cost Solutions in the Market

### Lowest Cost Wall

QuietRock on one side

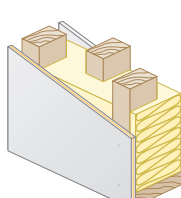


\*UL/ULC Design #:  
U309, U376  
U386, W313,  
W317

**STC: 52 - Fire: 1 Hour**

### Staggered Stud Wall

QuietRock on one side

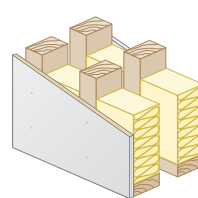


\*UL/ULC Design #:  
U340, U376,  
U386, W313,  
W317

**STC: 58\* - Fire: 1 Hour**

### Double Stud Wall

QuietRock on one side



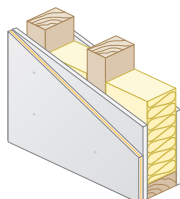
\*UL/ULC Design #:  
U341, U376,  
U386, W313,  
W317

**STC: 64\* - Fire: 1 Hour**

## Retrofit and Remodeling

### Single Stud Wall

QuietRock on one side of existing drywall

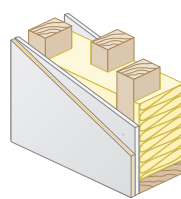


\*UL/ULC Design #:  
U309, U376,  
U386, W313,  
W317

**STC: 53 - Fire: 1 Hour**

### Staggered Stud Wall

QuietRock on one side of existing drywall



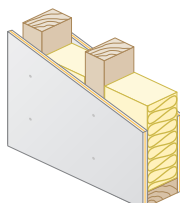
\*UL/ULC Design #:  
U340, U376,  
U386, W313,  
W317

**STC: 59\* - Fire: 1 Hour**

## High Performance

### Single Stud Wall

QuietRock on both sides

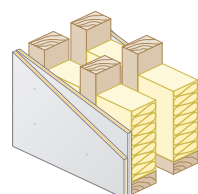


\*UL/ULC Design #:  
U376, W313

**STC: 54 - Fire: 1 Hour**

### Double Stud Wall

Double layer of QuietRock on both sides



\*UL/ULC Design #:  
U341, U376,  
W313

**STC: 54 - Fire: 1 Hour**

\* Estimated

See Acoustic and Fire Assemblies document for more information.

The information contained in this document is for general information purposes only. Features and specifications are subject to change. The diagrams and stated STC ratings listed are intended to serve as a guide. Construction practices have an influence on final STC ratings. Serious Materials cannot guarantee actual STC ratings. Flanking sound patterns, the integrity of the wall, and floor and ceiling construction are important factors in effective sound control.

STCs shown are on 610 mm (24") wood studs.

Distributed in Canada by:



Professional: 800-233-8990 • Consumer: 800-782-8777

