

# **TECTUM**<sup>®</sup>

*The Noise Control Solution*

JANUARY 2014

WHEN ACOUSTICS, STYLE AND  
TOUGHNESS MATTER

## **Acoustical Walls, Ceilings and Special Applications**





Tectum™ Acoustical Wall and Ceiling Panels are easy to work with and install and are commonly used in new construction, retrofits and anywhere acoustic absorption, style and toughness are needed. They absorb sound and are tough enough to stand up to daily abuse in high-traffic, heavy-use areas. Natural, painted, printed with your graphics or covered in fabric, they provide an attractive, durable finish in any interior application. Manufactured at the Tectum Inc. plant in Newark, Ohio, for over 65 years, Tectum Products stand the test of time.

Tectum Acoustical Panels are composed of aspen wood fibers, bonded with an exclusive inorganic hydraulic cement binder and formed in a continuous process under heat and pressure. As a result, physical characteristics usually obtained only with a combination of several separate building materials are found in Tectum Products: excellent sound absorption, abuse resistance, a decorative textured interior finish—all in a single, structurally strong yet lightweight product. All Tectum Products are Class A/Class I, with a flame spread of 0, in accordance with ASTM E-84.

Hard, reflective surfaces, multiple noise sources and the need to hear and understand others are the primary reasons that good acoustics are a critical part of any good design. All Tectum Products can be factory or field painted without impacting acoustical performance.

Being able to hear and understand is critical in:

- Restaurants
- Sound Studios
- Worship Facilities
- Display Spaces
- Open Office Settings
- Theaters
- Call Centers
- Museums
- Classrooms
- Gymnasiums
- Multipurpose Arenas
- Manufacturing Facilities
- Retail Stores
- Recording Studios

Tectum Acoustical Roof Deck provides an economical, environmentally responsible structural acoustical roof deck. To explore the design options for the building envelope, see our Roof Deck Catalog online.

## TABLE OF CONTENTS

### Properties

Acoustical .....	4
Finishes .....	4
LEED & Environment.....	5
Light Reflectance .....	6
Limited Lifetime Warranty .....	6

### Acoustical Wall Panels

Acoustical Mountings for Tectum Wall Panels.....	7
Standard Tectum Interior Panels.....	8
Tectum Finalé™ Panels .....	8
Tectum V-Line Panels .....	9
Fabri-Tough™ & Finalé Fabri-Tough.....	10
Fabri-Tough II & Finalé Fabri-Tough II .....	11
Kerfed Wall Panels.....	12
Sound Blocks .....	12

### Acoustical Ceiling Panels

Mountings for Tectum Ceiling Panels .....	13
Noise Reduction Coefficients.....	14
Interior Panels for Direct-Attached Ceilings.....	14
Lay-In Ceiling Panels .....	15
Acousti-Tough™ Ceiling Panels .....	15
Tonico™ & Soft-Look Tonico Ceiling Panels .....	16
Designer Series .....	16
Full-Span Corridor & Concealed Corridor Ceiling Panels .....	17
Concellico™ Ceiling System.....	18
Correctional Panels .....	18

### Specialty Applications

Hanging Baffles .....	19
Radius & Square Clouds .....	19

Tectum, Finalé, Acousti-Tough and Fabri-Tough are registered trademarks of Tectum Inc.

Note: Thickness dimensions throughout this brochure are nominal.

THERE IS NO ASBESTOS, NOR HAS THERE EVER BEEN ANY ASBESTOS, USED IN TECTUM PRODUCTS.

SPECIFICATIONS ARE SUBJECT TO CHANGE WITHOUT NOTICE. TECTUM INC. ASSUMES  
NO RESPONSIBILITY FOR TYPOGRAPHICAL ERRORS.

For live links to product documents, please visit our website and see the online  
Interior Products Catalog at: [www.Tectum.com/Catalog/2014\\_Tectum\\_Inc.\\_Interior\\_Catalog.pdf](http://www.Tectum.com/Catalog/2014_Tectum_Inc._Interior_Catalog.pdf)





## Acoustical

All Tectum Products start with a Standard Tectum Panel. Tectum cementitious wood fiber panels manufactured in Newark, Ohio, since 1949 provide an NRC of 0.40 – 1.00. To calculate the NRC needed for a specific space see Marketing Bulletin M-12.

Abuse resistant, easy to install in new construction or existing buildings, all Tectum Interior Panels have a Class A flame spread.

## Finishes

Factory finishes include white, natural or custom colors from the Sherwin Williams palette.

Designers use Standard Tectum Panels printed with historical photos, natural finishes or graphic designs to create custom wall and ceiling treatments that become a signature element of the space. Tectum Panels are shipped to a local printer for finishing.

Fabri-Tough, Fabri-Tough II, Finalé Fabri-Tough, Finalé Fabri-Tough II, and Fabri-Glass Panels are the fabric covered acoustical panels in the Tectum Catalog.

For information about Tectum Structural Roof Deck Products, please visit [Tectum.com/roofdeck](http://Tectum.com/roofdeck) or request a Roof Deck Catalog.



*From top (clockwise):  
Boy Scouts of America  
(Fargo, ND)*

*White Earth Tribal &  
Community College  
(Mahnomen, MN)*

*Como Park Zoo (St.  
Paul, MN)*



## LEED® & Environment

### ENVIRONMENTAL INFORMATION

The wood fibers (excelsior) used in Tectum Products come from Wisconsin aspen trees. The Wisconsin aspen is a self-propagating tree. When cut, a new tree will begin to grow back from the continuous root structure. In addition, all Wisconsin aspen used for Tectum products is air-dried. No drying kilns are used. The wood is stored in ranks to age naturally. No chemicals are used in the production of any excelsior purchased by Tectum Inc.

### TECTUM PRODUCTS AND LEED

Tectum Inc. fully endorses the LEED Green Building Rating System. Our products may contribute to the following LEED credit areas:

- EA Prerequisite 2: Minimum Energy Performance
- EA Credit 1: Optimized Energy Performance
- MR Credit 2: Construction Site Waste Management
- MR Credit 4: Recycled Content
- MR Credit 5: Regional Materials
- MR Credit 7: Certified Wood
- EQ Prerequisite 3 (LEED for Schools): Minimum Acoustical Performance
- EQ Credit 3.1 and 3.2: Construction IAQ Plans
- EQ Credit 4.1: Low-Emitting Materials, Adhesives and Sealants
- EQ Credit 4.4: Low-Emitting Materials, Composite Wood & Agrifiber Products
- EQ Credit 10 (LEED for Schools): Mold Prevention



- EQ Credit 11 (LEED for Schools): Low-Impact Cleaning and Maintenance Equipment Policy
- ID Credit 1: Innovation in Design

For complete information about Tectum products and LEED, please see:

- Marketing Bulletin M-81 (Tectum Products and LEED Certification)
- Marketing Bulletin M-83 (Tectum Products and LEED Q & A)
- Tectum Environmental Statement

For links to these documents as well as our Chain of Custody Letter, MSDS and California Air Quality Test Results, please visit the LEED page on our website.

\*Trademark of The U.S Green Building Council

*White Earth Tribal & Community College (Mahnomen, MN)*





### Light Reflectance

- In white or natural, the light reflectance is .75/.60 respectively.
- Perfect for indirect lighting (computer screens)
- Daylight harvesting

### Limited Lifetime Warranty

Tectum Inc. assumes full responsibility for its products and systems when installed in accordance with Tectum Inc.'s published recommendations at the time of purchase. Liability is limited to a refund of the purchase price or replacement of the material. Tectum Inc. will not be responsible for any labor or other charges for replacement of installation of defective material that has been shipped and/or installed, regardless of the circumstances.

Installations in accordance with the Ceiling & Interior Systems Construction Association's (CISCA) Code of Practices is strongly recommended.



*Right: After Hours Pediatric (Albuquerque, NM)*

*Below: Brooklyn College (Brooklyn, NY)*



# ACOUSTICAL WALL PANELS

PROPERTIES

ACOUSTICAL WALL PANELS

ACOUSTICAL CEILING PANELS

SPECIALTY APPLICATIONS

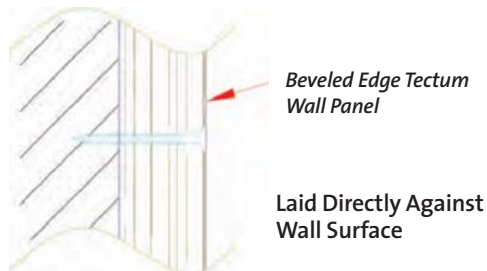
## Acoustical Mountings for Tectum Wall Panels

### For Beveled Edge Tectum Wall Panels.

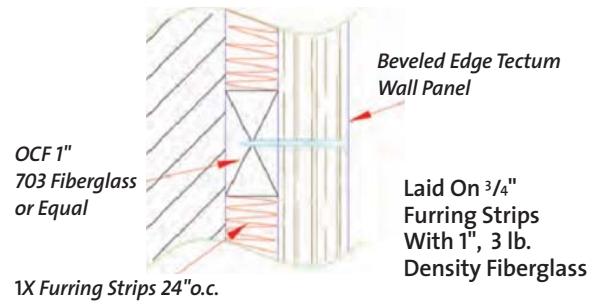
The mounting method should be selected to achieve the desired level of acoustic absorption.

Tectum painted head screws are recommended for all installations.

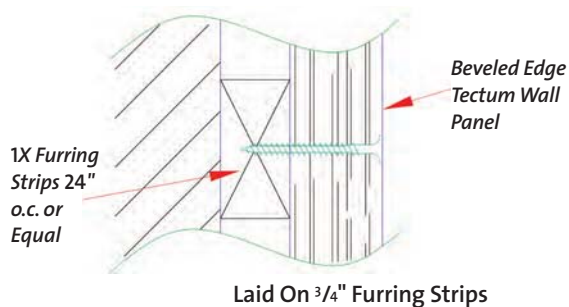
#### MOUNTING A



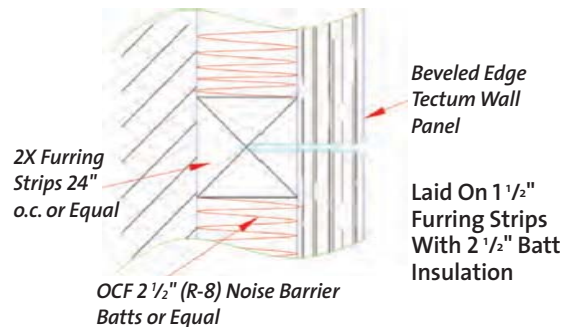
#### MOUNTING C-20



#### MOUNTING D-20



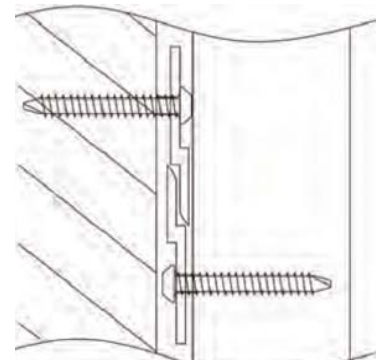
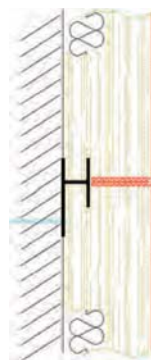
#### MOUNTING C-40



### For Fabric-Covered Wall Panels

Using the spline system to mount the panels makes installation quick and easy. The wall panel fabric is wrapped around the edges on the long sides to the kerf. Panels are installed by inserting the vinyl spline into the kerf, then fastening the splines to a substrate.

All Tectum fabric-covered wall panels are available as Décor Panels for spaces where an individual, stand-alone panel is needed. Décor Panels are installed using Z-clips.



## Standard Tectum Interior Panels

Standard Tectum Interior Panels have been proven in schools and public spaces for 65 years. It is the most economical solution for any space that includes mechanical noise or will see activities that produce undesirable noise levels. Abuse resistant and lightweight, Tectum Interior Panels stand up to the high-impact environments of gyms, manufacturing facilities and multipurpose arenas.

Easy to install in new construction or in an existing building for effective sound control, Tectum Acoustical Panels can achieve a Noise Reduction Coefficient (NRC) of up to 1.00.

Furring strips installed horizontally (when using vertical panels) are recommended and should be a maximum of 24" on center.



*Algona Family YMCA  
(Algona, IA)*

### Standard Tectum Specification Details:

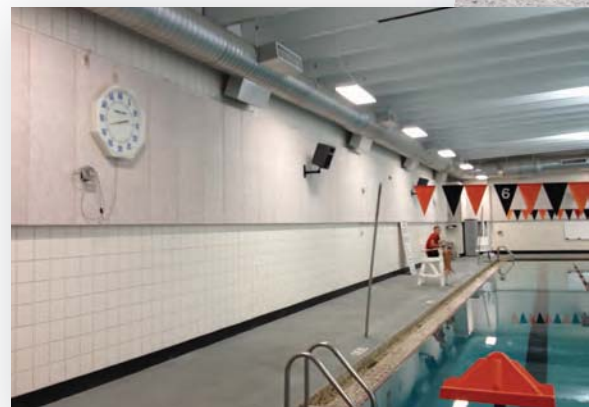
EDGE DETAIL	NRC	THICKNESS	WIDTH	LENGTH	WEIGHT P/SF
Long Edges Beveled	.40 – .85	1"	23 3/4"	48" up to 144"	1.65
	.55 – .95	1 1/2"	31 3/4" or		2.55
	.60 – 1.0	2"	47 3/4"		3.50
T&G Edges, Square Ends	.55 – .95	1 1/2"	23", 31" or 47"	72" up to 144"	2.55
	.60 – 1.0	2"			3.50

## Tectum Finalé Panels

Tectum Finalé panels are the solution for spaces that require an NRC of .75 to 1.00. The Finalé assembly consists of Tectum Panels, Tectum Spacer Strips and SoniCor® infill united in a single product, making installation easy and efficient.

Whenever your space calls for the highest possible absorption of undesirable noises, and where the activities demand abuse-resistant panels, Tectum Finalé is the answer.

Finalé Panels are also available with Fabri-Tough or Fabri-Tough II finishes.



*Licking County Family YMCA  
(Newark, OH)*

### Tectum Finalé Specification Details:

EDGE DETAIL	NRC	THICKNESS **	WIDTH	LENGTH	WEIGHT P/SF
Long Edges Beveled	.75	1"	23 3/4", 31 3/4" or 47 1/4"	48" up to 144"	2.50
	.80	1 1/2"			3.00

\* SoniCor is a registered trademark of Concept Industries

\*\* Thicknesses include the Tectum Panel only; add 1" for finished size



ACOUSTICAL WALL PANELS

PROPERTIES

ACOUSTICAL WALL PANELS

ACOUSTICAL CEILING PANELS

SPECIALTY APPLICATIONS

Tectum V-Line Panels

Tectum V-Line Interior Panels offer extra value and installation ease plus all the features you expect from Tectum Acoustical Products.

V-Line Interior Panels are regularly specified as wall or direct-attached ceiling panels. They attach directly for a continuous installation without a seam being visible. The “V” groove is 1/4" deep to match the beveled edges, and the design divides the panel into equal segments approximately 8" wide.

EDGE DETAIL	NRC	THICKNESS	WIDTH	LENGTH	WEIGHT P/SF
Long Edges Beveled	.40 – .85	1"	23 3/4",	48" up to 144"	1.65
	.55 – .95	1 1/2"	31 3/4" or		2.55
	.60 – 1.0	2"	47 3/4"		3.50



After Hours Pediatric  
(Albuquerque, NM)



## Fabri-Tough & Finalé Fabri-Tough

Abuse-resistant Tectum Fabri-Tough Acoustical Panels set a new standard for durability in fabric wrapped wall panel systems. Depending on mounting Fabri-Tough Wall Panels can provide NRC's from .50 to .90.

Fabri-Tough Wall Panels can be field cut to desired size. Mounting is quick and easy via the internal spline system. The wall panel fabric is wrapped around the edges of the long sides to the kerf. Panels are installed by inserting the furnished vinyl splines into the kerf, then fastening the splines to the wall or other structure. Decor panels (wrapped on all four sides) are installed with Z clips on the back of the panel.

For panels to be used in recessed areas, some field adjusting may be necessary.



*Southland Christian (Lexington, KY)*

### Fabri-Tough Specification Details:

EDGE DETAIL	NRC	THICKNESS	WIDTH	LENGTH	WEIGHT P/SF
Kerfed – Long Edges Fabric Wrapped to Kerf	.50 – .90	1"	24"	48" up to 120"	1.70
Décor – All Four Edges Fully Wrapped	.50 – .90	1"	24" or 48"	48" up to 120"	1.70

Finalé Fabri-Tough Acoustical Panels are offered in the full range of Fabri-Tough patterns and colors for spaces that require even greater NRC. The fabric is abuse-resistant and self-healing when used with pushpins and tacks, making it a welcome addition to classrooms, office spaces and worship facilities.

### Finalé Fabri-Tough Specification Details:

EDGE DETAIL	NRC	THICKNESS*	WIDTH	LENGTH	WEIGHT P/SF
Kerfed – Long Edges Fabric Wrapped to Kerf	.85	1"	24"	48" up to 120"	2.70
Décor – All Four Edges Fully Wrapped	.85	1"	24" or 48"	48" up to 120"	2.70

\* Thicknesses include the Tectum Panel only; add 1" for finished size

## ACOUSTICAL WALL PANELS

PROPERTIES

ACOUSTICAL WALL PANELS

ACOUSTICAL CEILING PANELS

SPECIALTY APPLICATIONS

### Fabri-Tough II & Finalé Fabri-Tough II

Tectum Fabri-Tough II Acoustical Panels are the answer for spaces that need the acoustic performance and underlying toughness of Tectum Panels, but with a custom, sophisticated finish. Incorporate custom fabric finishes on Tectum Fabri-Tough II Panels to create a unique, signature wall finish.

#### Fabri-Tough II Specification Details:

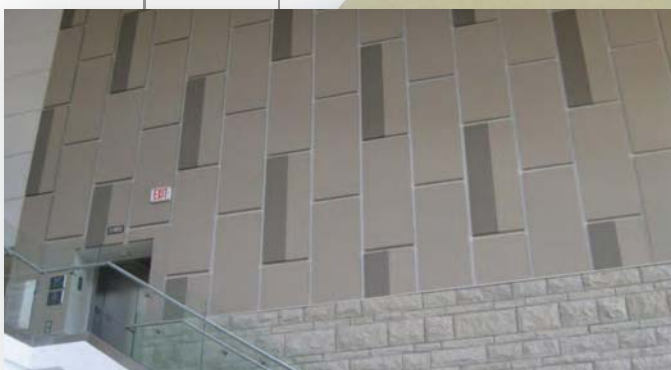
EDGE DETAIL	NRC	THICKNESS	WIDTH	LENGTH	WEIGHT P/SF
Kerfed – Long Edges Fabric Wrapped to Kerf	.75*	1"	23 3/4"	23" up to 120"	1.69
Décor – All Four Edges Fully Wrapped	.75*	1"	23 3/4" or 47 3/4"	23" up to 120"	1.69

Finalé Fabri Tough II Panels are the preferred solution for conference rooms, theaters and anywhere acoustic performance and sophisticated design appeal are equally important. Specify the custom fabric that meets your design criteria. There is no need to sacrifice style for good acoustics or good acoustics for style.

#### Finalé Fabri-Tough II Specification Details:

EDGE DETAIL	NRC	THICKNESS	WIDTH	LENGTH	WEIGHT P/SF
Kerfed – Long Edges Fabric Wrapped to Kerf	.75*	1"	23 3/4"	48" up to 120"	2.70
Décor – All Four Edges Fully Wrapped	.75*	1"	23 3/4" or 47 3/4"	48" up to 120"	2.70

\*Fabri-Tough II and Finalé Fabri-Tough II tested with Guilford FR701 fabric. Results may vary when using other fabrics.



*Romeoville Village  
Hall (Romeoville, IL)*



## Kerfed Wall Panels

Kerfed Wall Panels offer extra value and ease of installation while concealing the fasteners and providing all the features you expect from Tectum acoustical products.

Installation of Tectum Kerfed Wall Panels is fast and economical. Mounting occurs using the concealed attachment method, by inserting the furnished vinyl splines into the kerf, then fastening the splines to the wall or other structure.



Lee's Summit Schools (Lee's Summit, MD)

### Kerfed Wall Panels Specification Details:

EDGE DETAIL	NRC	THICKNESS	WIDTH	LENGTH	WEIGHT P/SF
Beveled, Kerfed, Square Ends	.40 – .85	1"	23 3/4"	48" up to 144"	1.65

## Sound Blocks

Tectum Sound Blocks are a decorative way to control reverberant sound in new or existing rooms. Their dimensions and beveled edges make them easy to install in various patterns. Recommended spacing is 24" or 32" o.c. They come complete with individual hanging clips. Other sizes are available on special order.

### Sound Block Specification Details:

EDGE DETAIL	THICKNESS	WIDTH	LENGTH	WEIGHT P/SF
All Edges Beveled	3"	15 1/2"	15 1/2"	5.3

### SOUND ABSORPTION COEFFICIENTS

Sabins Per Unit	125	250	500	1000	1000	4000
24" o.c.	.36	.53	1.81	2.65	2.75	2.73
32" o.c.	.45	.71	1.87	2.94	2.90	2.91



WBNS  
Channel Ten  
(Columbus,  
OH)

## ACOUSTICAL CEILING PANELS

### Tectum Acoustical Ceiling Panels

Tectum Ceiling Panels combine a unique textured beauty with superior abuse resistance. These high-impact wood fiber panels combine several functions that truly set them apart for use in commercial, institutional, recreational and industrial buildings.

#### Features:

- Reduces noise—NRC up to 1.00
- Class A interior finish
- Durability—tough, abuse resistant
- Lifetime warranty against breakage
- Economical—longer life span
- Can be field painted six times (see Marketing Bulletin M-77 for specific application)
- Nationwide distribution
- Also available in metric sizes
- R-Value is 1.75/inch
- Light reflectance up to .75

The panels are available in a wide range of sizes. They can be cut easily and shaped with standard woodworking tools, and installed in standard grid systems.

Tectum Ceiling Panels meet the requirements of ASTM E-1264 Type XIV pattern L Class A.

### Mountings for Tectum Ceiling Panels:

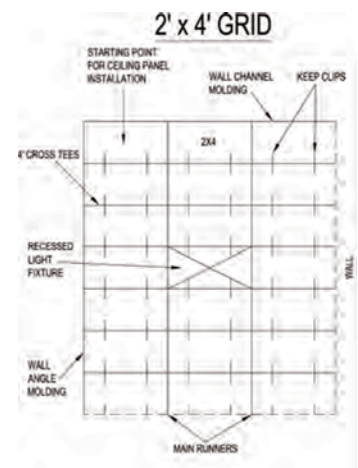
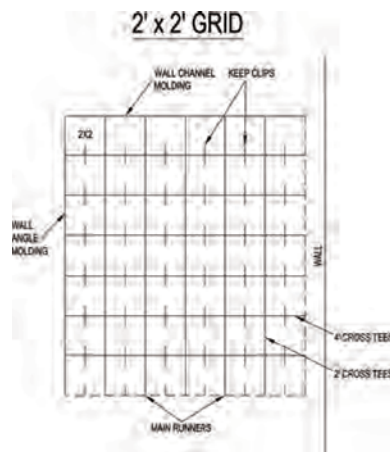
All Tectum Lay-In Ceiling Panels require a standard  $1\frac{5}{16}$ " intermediate duty grid with  $1\frac{1}{2}$ " high web.

The Tectum Acousti-Tough Ceiling System uses a lay-in panel with keep clips. Proper placement of the keep clips is critical to performance. Keep clips should be placed as illustrated.

Tectum Direct-Attached Ceiling Panels can be mechanically attached to a variety of ceiling substrates which include: the underside of the roof deck; the joists and other support members; drywall suspension systems; metal and wood furring structures and other commonly used support systems. Panels should be placed in an ashlar pattern (cinder block style).



*Figlio (Minneapolis, MN)*



## Noise Reduction Coefficients



*Chipotle  
Mexican Grill  
(Brunswick, OH)*

CEILING PANEL	THICKNESS	MOUNTING	NRC
Direct-Attached	1"	A	.40
		D-20	.45
		C-20	.80
		C-40	.85
	1 1/2"	A	.55
		D-20	.60
		C-20	.90
		C-40	.95
	2"	A	.60
		D-20	.70
		C-20	.95
		C-40	1.00
Lay-In, Full Span Corridor & Acousti-Tough	1"	E-400	.45
	1 1/2"		.50
	2"		.55
Tonico	1"	E-400	.45
	1 1/2"		.50
Soft-Look Tonico	1"	E-400	.45
Designer Series & Designer Series Plus	1"	E-400	.45
	1 1/2"		.50
Concealed Corridor	1 1/2"	E-400	.50
	2"		.55
Concellico	1 1/2"	E-400	.50
Correctional	1" +	A	.40
	1 1/2" +		.55
	2" +		.60

## Interior Panels for Direct-Attached Ceilings

Tectum Direct-Attached Ceiling Panels create a monolithic appearance without the use of a ceiling grid. They combine a unique textured look with superior acoustic dampening and abuse resistance.

EDGE DETAIL	THICKNESS	WIDTH	LENGTH	WEIGHT P/SF
Beveled on Four Sides	1"	23 3/4", 31 3/4", 47 3/4"	48" up to 96"	1.65
	1 1/2"			2.55
	2"			3.50

*Winchester  
Restaurant  
(Grand Rapids,  
MI)*





ACOUSTICAL CEILING PANELS

PROPERTIES

ACOUSTICAL WALL PANELS

ACOUSTICAL CEILING PANELS

SPECIALTY APPLICATIONS

Lay-In Ceiling Panels

These impact resistant wood fiber panels combine the toughness and acoustic performance that are the hallmark of all Tectum Products together with an easy-to-install, easy-to-maintain lay-in panel. By using Tectum Lay-In, Tonico and Designer Series panels, a designer can create a variety of three-dimensional, custom patterns. When combined with the custom color options in the Sherwin Williams palette, the design possibilities are endless.

EDGE DETAIL	THICKNESS	WIDTH	LENGTH	WEIGHT P/SF
Square	1"	23 3/4"	23 3/4" or 47 3/4"	1.65
	1 1/2"*	23 3/4" or 47 3/4"		2.55
	2"*			3.50

\*1 1/2" and 2" are back-rabbeted



Sea Star Restaurant  
(Seattle, WA)

Acousti-Tough Ceiling Panels

The Tectum Acousti-Tough Ceiling System is a suspended acoustical ceiling specifically designed for multipurpose rooms and gymnasiums. Tectum panels are the only durable panels that can take repeated blows from basketballs, volleyballs or soccer balls without cracking or breaking.

The Tectum Keep Clip, an integral part of the Acousti-Tough Ceiling System, helps hold the Tectum Ceiling Panels in place, saving maintenance time and money in high ceiling, high impact areas. It is simple to install and permits full access to the plenum.



Tampa Preparatory School  
(Tampa, FL)

EDGE DETAIL	THICKNESS	WIDTH	LENGTH	WEIGHT P/SF
Square	1"	23 3/4"	23 3/4" or 47 3/4"	1.65
	1 1/2"			2.55
	2"			3.50

## Tonico & Soft-Look Tonico Ceiling Panels

Tonico Ceiling Panels are lay-in panels with a tagular edge. The panels are face rabbeted to provide a  $\frac{13}{32}$ " reveal in 1" panels, a  $\frac{3}{4}$ " reveal for 1  $\frac{1}{2}$ " panels and a 1" reveal in 2" panels).

### Tonico Ceiling Panel Specification Details:

EDGE DETAIL	THICKNESS	WIDTH	LENGTH	WEIGHT P/SF
Face Rabbeted	1"	23 ¾"	23 ¾" upto 95 ¾"	1.65
	1 ½"	23 ¾" or 47 ¾"		2.55
	2"			3.50

Soft-Look Tonico Panels are similar to Tonico Panels, but with the angle of the rabbet on the face of the panel changed to create a softer, tapered appearance.

### Soft-Look Tonico Ceiling Panel Specification Details:

EDGE DETAIL	THICKNESS	WIDTH	LENGTH	WEIGHT P/SF
Face Rabbeted	1"	23 $\frac{3}{4}$ "	23 $\frac{3}{4}$ " or 47 $\frac{3}{4}$ "	1.65

## Designer Series

A unique textural element can be introduced in a wall or ceiling treatment using Tectum Designer Series Panels. Any combination of straight-line face grooves can be cut into the surface of a Standard Tectum Panel to create a custom 3-D linear look in the Designer Series. Originally introduced as a lay-in ceiling panel, Designer Series Panels are now popular as wall panels as well.

### Designer Series Wall and Ceiling Panels (except Designer Series Plus)\*

EDGE DETAIL	THICKNESS	WIDTH	LENGTH	WEIGHT P/SF
Face Rabbeted or Beveled Edges	1"	23 $\frac{3}{4}$ " OR 47 $\frac{3}{4}$ "	23 $\frac{3}{4}$ " up to 95 $\frac{3}{4}$ "	1.65
	1 $\frac{1}{2}$ "			2.55
	2"			3.50

\* Designer Series Plus available in 23  $\frac{3}{4}$ " x 23  $\frac{3}{4}$ " only.



*Dell Children's Hospital  
(Austin, TX)*



*Matt the Miller's Tavern (Columbus, OH)*



ACOUSTICAL CEILING PANELS

PROPERTIES

ACOUSTICAL WALL PANELS

ACOUSTICAL CEILING PANELS

SPECIALTY APPLICATIONS

Full-Span Corridor & Concealed Corridor Ceiling Panels

Tectum Full-Span Corridor Panels are specifically designed for wide-corridor public buildings, offering a durability for such heavily used areas that is not found in other acoustical materials. These panels are installed using standard grid suspension components.

Full-Span Corridor Panel Specification Details:

EDGE DETAIL	THICKNESS	WIDTH	LENGTH	WEIGHT P/SF
Face	1"			1.65
Rabbeted,	1 1/2"	23 3/4" or 29 3/4"	48" up to 144"	2.55
Two Long Sides	2"			3.50



The Concealed Corridor Ceiling Panel was created as a second option for corridor ceilings in schools and other wide-corridor buildings that call for a completely concealed suspension system. The panels are used with standard suspension components.

Concealed Corridor Panel Specification Details:

EDGE DETAIL	THICKNESS	WIDTH	LENGTH	WEIGHT P/SF
Both Long Sides, Beveled & Rabbeted, One Long Side Also Kerfed.	1 1/2" 2"	23 3/8"	48" up to 144"	2.55 3.50



Brooks School (Andover, MA)



## Concellico Ceiling System

Tectum Concellico Ceiling System combines the acoustical absorption and abuse resistance of standard Tectum Ceiling Panels with a completely concealed grid system. Using a specially designed stabilizer bar between main tees, Concellico provides for a consecutive, concealed, suspended ceiling system.

### Concellico Specification Details:

EDGE DETAIL	THICKNESS	WIDTH	LENGTH	WEIGHT P/SF
Beveled Kerfed Back-Rabbeted, Short Ends T&G	1 1/2"	23 3/8"	48", 60" or 72"	2.55

All dimensions bevel to bevel

## Correctional Panels

Tectum Panels for Correction Facilities help to meet the American Correction Association standards for acoustics, are abuse resistant and difficult to break.

### Correctional Panels Specification Details:

EDGE DETAIL	THICKNESS*	WIDTH	LENGTH	WEIGHT P/SF
Beveled	1"			2.80
	1 1/2"	23 3/4"	48" or 96"	4.00
	2"			4.80

\*All Tectum Correctional Panels are nominal thicknesses + 24 ga. steel plate



SPECIALTY APPLICATIONS

PROPERTIES

ACOUSTICAL WALL PANELS

ACOUSTICAL CEILING PANELS

SPECIALTY APPLICATIONS

Hanging Baffles

Tectum Hanging Baffles are growing in popularity as end users and owners recognize the importance of good acoustics. The properties of Tectum Panels (field machinable, paintable, abuse resistance) make them ideal for hanging baffles.



Los Angeles Police Department Firing Range  
(Los Angeles, CA)

Radius & Square Clouds

Clouds are a great solution for call centers, open offices and any large space where reducing noise is a business necessity. Because Tectum Panels are easily cut and formed in the field, the design options are almost limitless.

Tectum Clouds Specification Details:

EDGE DETAIL	NRC	THICKNESS	WIDTH	LENGTH	WEIGHT P/SF
Square or Radius Corners	.50 .60	1 1/2" 2"	23 3/4" or 47 3/4"	48" up to 96" (square ends) 48" (radius ends)	2.55 3.50



Patrick Heath  
Library  
(Boerne, TX)



After more than half a century in widespread use, Tectum Acoustical Products have won the trust of commercial, industrial and institutional designers.

For more information, visit our website or call us at 888-977-9691.

Visit our website for links to these online  
continuing education programs:

Architectural Record Continuing Education Center  
AEC Daily • The Continuing Architect

**TECTUM**  
*The Noise Control Solution*

888-977-9691  
info@tectum.com  
www.tectum.com